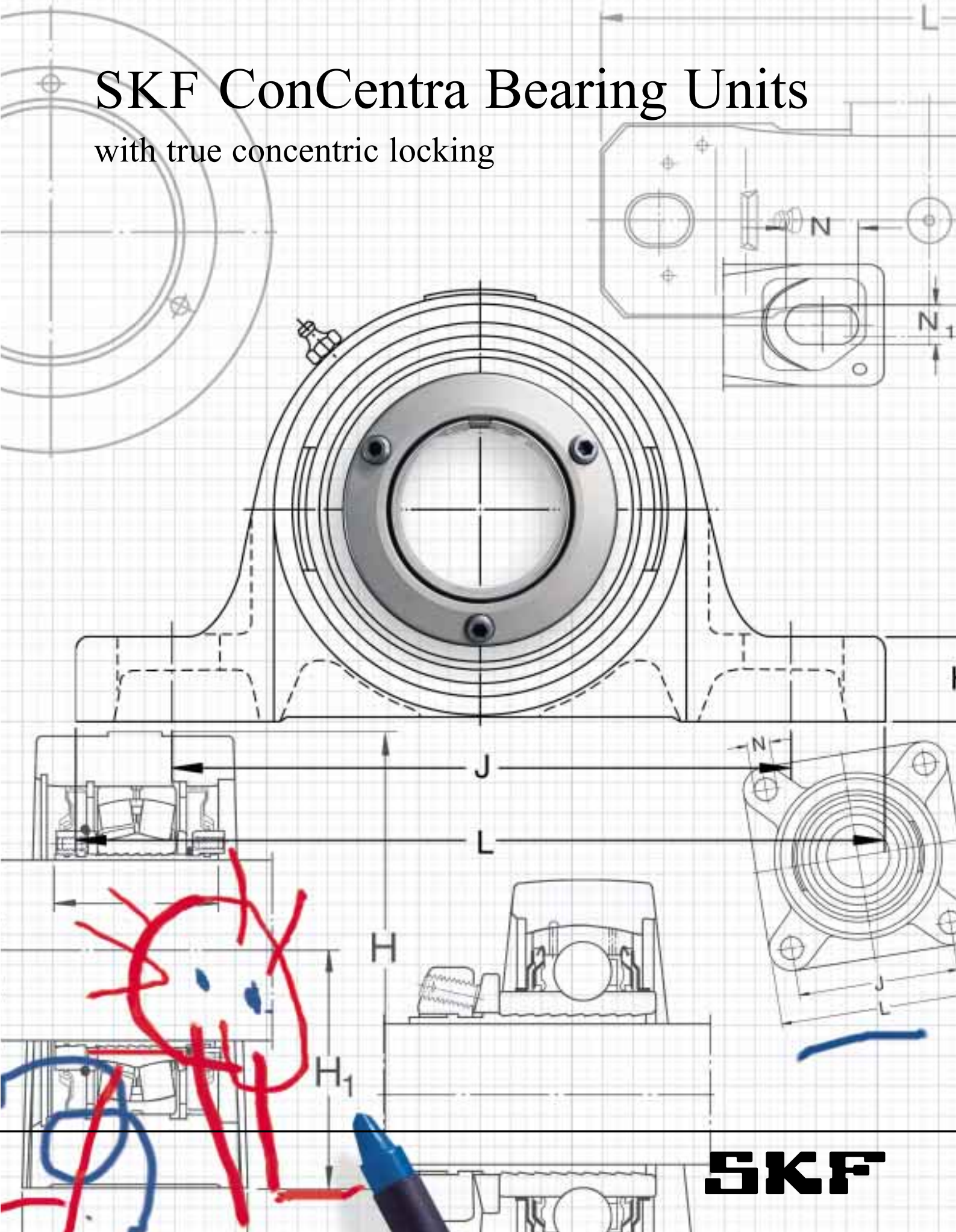


SKF ConCentra Bearing Units

with true concentric locking



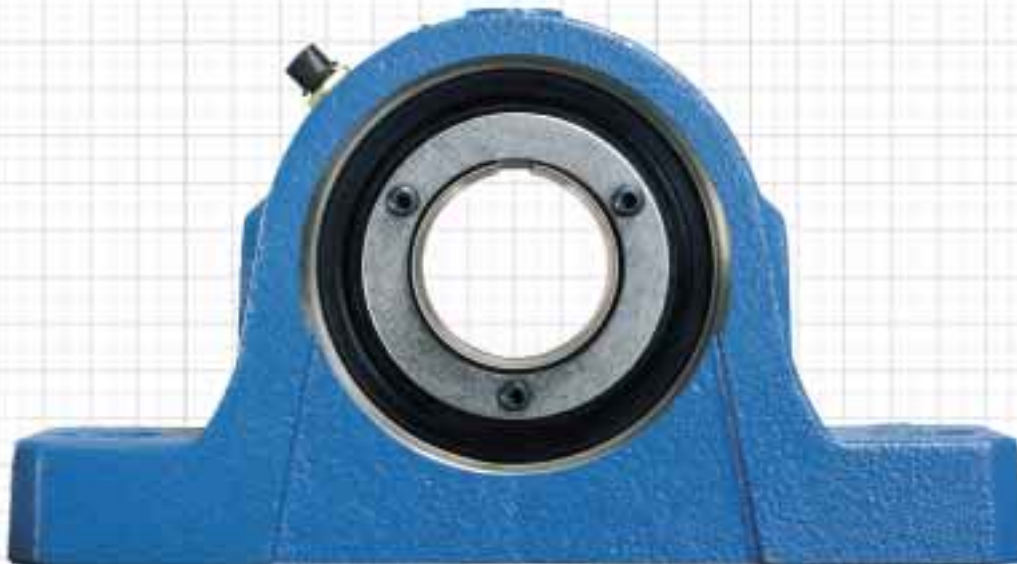
SKF

A new range of bearing units with a revolutionary locking system



SKF ConCentra Ball Bearing Unit

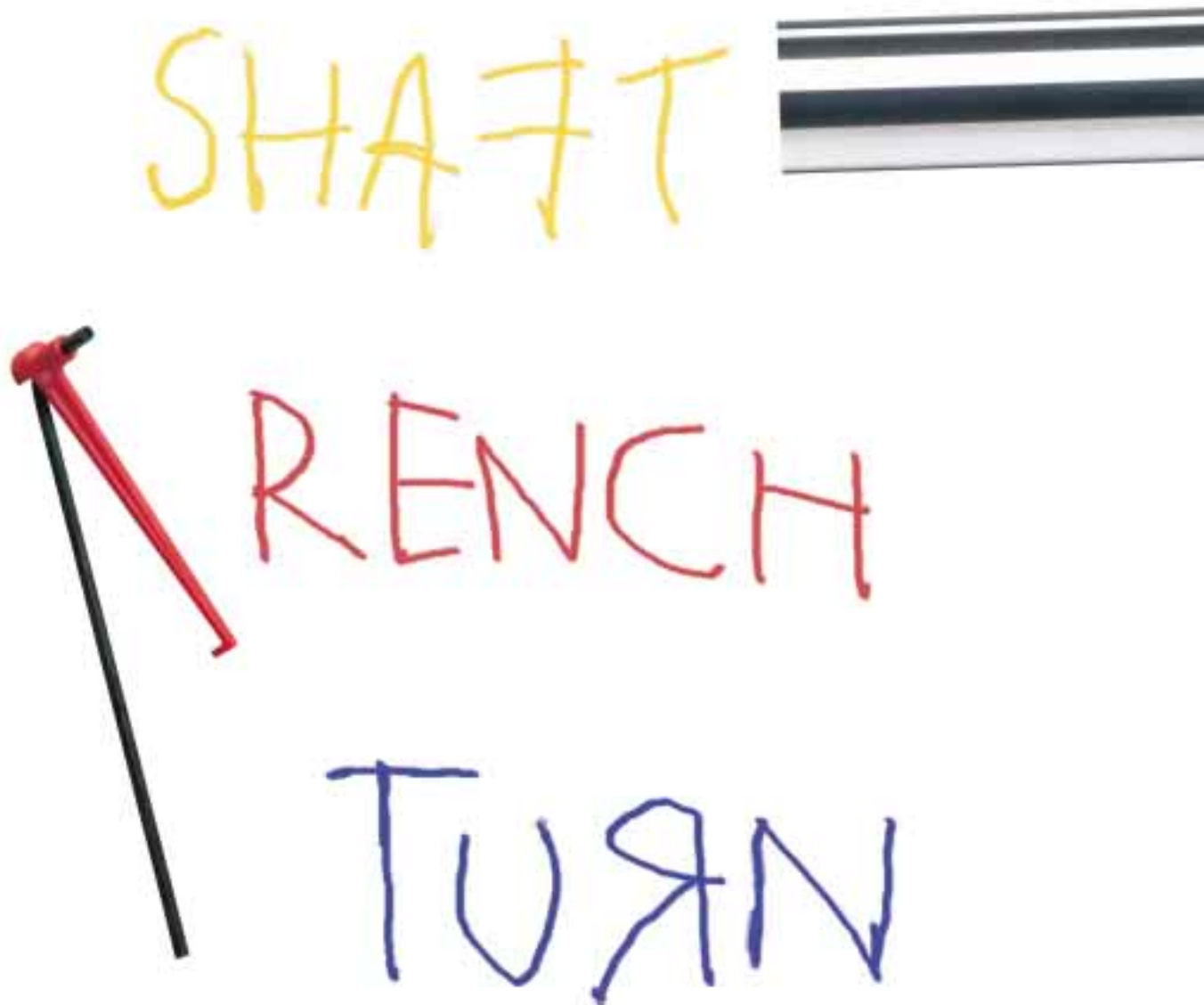
with a sealed SKF deep groove ball bearing, pre-lubricated for life or pre-lubricated with a lubrication fitting



SKF ConCentra Roller Bearing Unit

with the unique SKF Explorer spherical roller bearing, sealed and pre-lubricated with a lubrication fitting

Proven ease of installation



*A bearing unit with integrated true concentric locking takes a firm, almost 360° grip on the shaft.
SKF ConCentra bearing units are complete and ready to mount. The hard work has already been
done by SKF. The rest is so easy a child could do it.*

Refined technology

CONCENTRA bearing units are the result of extensive consultation with customers. They told us what they wanted from the bearing of the future: maximum reliability and easy installation.

At SKF, we know that the service life of a bearing is determined at the time of installation. The tiniest error or particle of dust can have devastating consequences. Enabling easy installation without compromising the bearing demands some serious innovation.



The ConCentra torque wrench makes it easy to tighten the screws correctly.

By using sealed, pre-lubricated bearings in a solid housing, we eliminate most sources of human error. But the real innovation is the unique connection between the bearing and the shaft – SKF ConCentra – a built-in mechanical connector that applies a near 360° concentric grip around the entire circumference of the shaft. With the right force and the right internal clearance, every time.

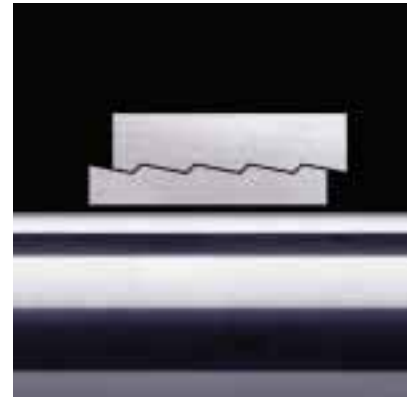
The ConCentra concept is based on two paired rings with precision-engineered serrations on their contact surface. The rings respond to axial displacement by expanding radially against the shaft.

The serrations are integrated into the inner ring of the bearing. This

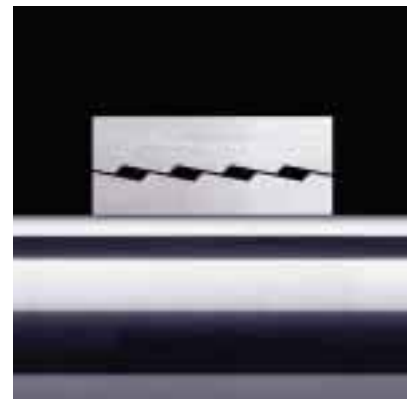
reduces both the interior measurements and the number of components.

Once the bearing is correctly positioned on the shaft, the mounting screws are tightened, axially displacing the rings. The slotted ring grips the shaft as the internal clearance in the bearing is reduced. An Allen wrench with a built-in torque indicator (included) quickly shows when the torque and consequently the internal clearance conform to SKF's recommendations.

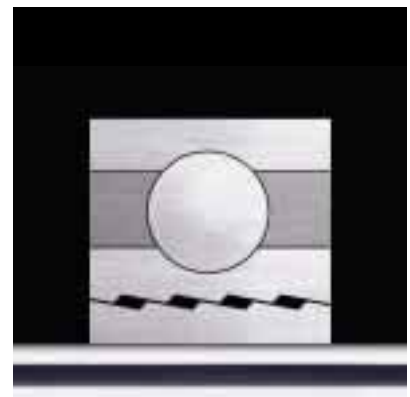
This technology enables a bearing to operate with maximum reliability – improving both function and service life.



Rings with precision-engineered serrations are the foundation of ConCentra bearing units.



The rings respond to axial displacement by expanding evenly around the entire circumference of the shaft.



The result is an easy-to-install unit with reliable function – and no need to increase dimensions when replacing traditional bearings units.

Future benefits

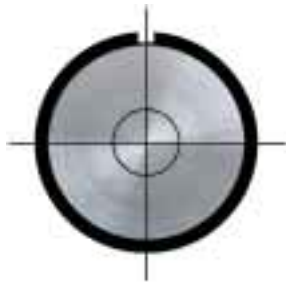
IMPROVING bearing functionality is a practical way of upgrading a machine. It doesn't have to increase overall costs, either – over the life cycle of the machine, it often reduces costs.

Easy mounting

ConCentra bearing units provide superb bearing performance, yet can be mounted as quickly and easily as the simplest solutions on the market.



Conventional mounting with set screws results in uneven load distribution. Shaft damage caused by screws makes removal difficult and may displace the shaft axis from the center of the bearing, with a risk of imbalance and vibrations.



All these problems are effectively eliminated by ConCentra, thanks to true concentric locking.

If you already use traditional concentric bearing arrangements, ConCentra will speed up installation. If you use simple locking

solutions, ConCentra is a radical upgrade with no increase in mounting time. And there's no need for ground and polished shafts – ConCentra can handle tolerances as low as ISO h9/IT5 with no problem.

Improved function

Dirt particles and improper mounting are two of the most common causes of bearing failure. ConCentra bearing units eliminate both problems.

Factory assembly and concentric mounting give the bearings the best possible chance of trouble-free operation. And there is no eccentric mounting to cause fit-related corrosion problems.

Less maintenance

ConCentra locking technology reduces vibration and fretting corrosion. The result is longer service intervals and less need for service-related resources. Often, once a ConCentra bearing unit is mounted, it never needs to be touched by a human hand again.

If service is needed, there is not an easier or quicker way to dismount bearings on the market today. ConCentra eliminates costly, time-consuming shaft repair, so your equipment is up and running faster. SKF ConCentra locking technology is part of our continuous improvement in Total Shaft Solutions™.



ConCentra bearing units are a dependable, cost-efficient solution for a wide range of application areas, including air handling, agriculture ...

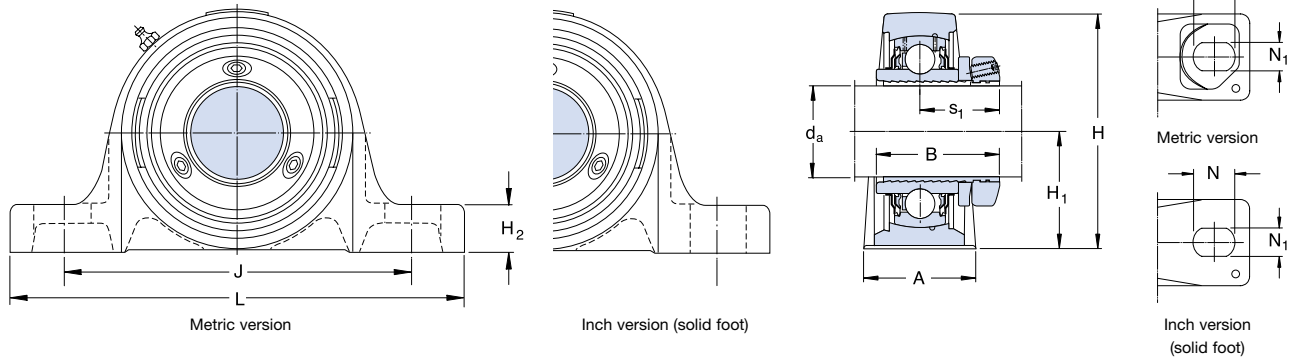


... and material handling. Please contact SKF for references.

ConCentra Ball Bearing Unit

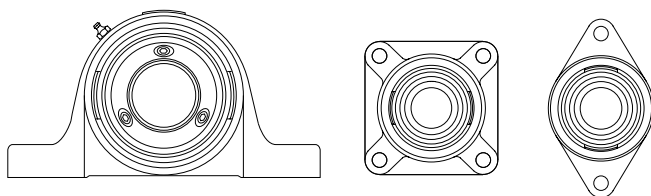
with true concentric locking technology

The ball bearing unit is a perfect solution for high-speed applications. It is equipped with contact seals, external flingers and a high quality lithium/calcium grease that allow the bearing to be lubricated for life.



Shaft diameter d_a	Bearing unit Dimensions											Basic load ratings		Speed rating	Designation	Torque Set (set screws)	
	A	B	H	H_1	H_2	J min	J max	L	N	N_1	s_1	C	C_0			Nm	Set screw
mm												kN	r/min	-	Nm	-	
25	36	41	70	36.5	16	94	110	130	19.5	11.5	29	14	7,8	7 000	SY 25 PF	4,2	M5
30	40	45	82	42.9	17	108	127	152	23.5	14	31	19	11,2	6 300	SY 30 PF	4,2	M5
35	45	47	93	47.6	19	119	133	160	21	14	32	25	15,3	5 300	SY 35 PF	7,4	M6
40	48	51	99	49.2	19	125	146	175	24.5	14	34	30	19	4 800	SY 40 PF	7,4	M6
45	48	52	107	54	21	135	152	187	22.5	14	35	33	21,6	4 300	SY 45 PF	7,4	M6
50	54	54	114	57.2	22	149	165	203	26	18	36	35	23,2	4 000	SY 50 PF	7,4	M6
55	60	57	125	63.5	24	162	181	219	27.5	18	37	43	29	3 600	SY 55 PF	7,4	M6
60	60	59	137	69.9	26.5	179	202	240	29.5	18	38	52	36	3 400	SY 60 PF	7,4	M6

in												lbf	r/min	-	in.lbf	-	
1	1 7/16	1 5/8	2 3/4	1 7/16	5/8	3 11/16	4 5/16	5 1/8	3/4	7/16	1 1/8	3 150	1 750	7 000	SY 1 PF/AH	37	M5
1 3/16	1 9/16	1 3/4	3 1/4	1 11/16	5/8	4 1/4	5	6	15/16	9/16	1 3/16	4 380	2 520	6 300	SY 1.3/16 PF/AH	37	M5
1 1/4	1 3/4	1 7/8	3 11/16	1 7/8	3/4	4 11/16	5 1/4	6 7/16	13/16	9/16	1 1/4	5 730	3 440	5 300	SY 1.1/4 PF/AH	37	M5
1 3/8	1 3/4	1 7/8	3 11/16	1 7/8	3/4	4 11/16	5 1/4	6 7/16	13/16	9/16	1 1/4	5 730	3 440	5 300	SY 1.3/8 PF/AH	66	M6
1 7/16	1 3/4	1 7/8	3 11/16	1 7/8	3/4	4 11/16	5 1/4	6 7/16	13/16	9/16	1 1/4	5 730	3 440	5 300	SY 1.7/16 PF/AH	66	M6
1 1/2	1 7/8	2	3 7/8	1 15/16	3/4	4 15/16	5 3/4	6 7/8	1	9/16	1 5/16	6 900	4 270	4 800	SY 1.1/2 PF/AH	66	M6
1 11/16	1 7/8	2	4 1/4	2 1/8	3/16	5 5/16	6	7 3/8	7/8	9/16	1 3/8	7 460	4 860	4 300	SY 1.11/16 PF/AH	66	M6
1 15/16	2 1/8	2 1/8	4 1/2	2 1/4	7/8	5 7/8	6 1/2	8	1	11/16	1 3/8	7 890	5 220	4 000	SY 1.15/16 PF/AH	66	M6
2 3/16	2 3/8	2 1/4	5	2 1/2	15/16	6 3/8	7 1/8	8 3/8	1 1/16	11/16	1 7/16	9 800	6 520	3 600	SY 2.3/16 PF/AH	66	M6
2 7/16	2 3/8	2 5/16	5 1/2	2 3/4	1	7 1/16	7 15/16	9 7/16	1 1/8	11/16	1 1/2	10 700	7 310	3 400	SY 2.7/16 PF/AH	66	M6
2 11/16	2 9/16	2 3/8	5 7/8	3	1 1/8	7 1/2	8 1/2	10 1/8	1 3/8	7/8	1 1/2	12 600	9 110	3 000	SY 2.11/16 PF/AH	66	M6
2 15/16	2 13/16	2 1/2	6 1/2	3 1/4	1 1/4	8	9	11	1 3/8	7/8	1 5/8	14 900	11 000	2 600	SY 2.15/16 PF/AH	66	M6

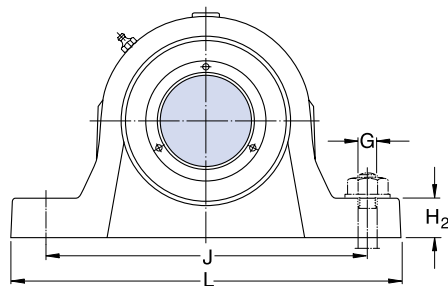
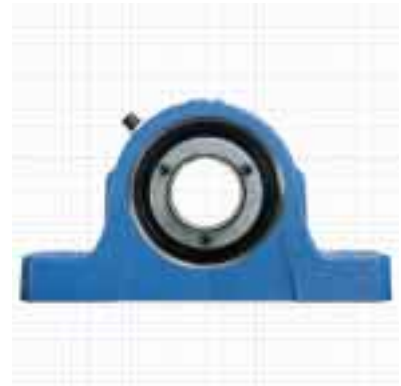


Different bearing housing styles
SKF ConCentra ball bearing units are available in a wide range of housing styles.

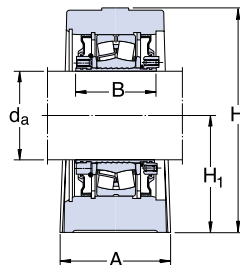
ConCentra Roller Bearing Unit

with true concentric locking technology

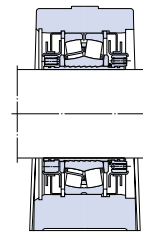
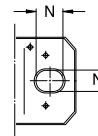
The roller bearing unit is intended for applications with a large radial load and a risk of shaft misalignment. SKF Explorer spherical roller bearings are built-in. Explorer quality enables you to reduce bearing dimensions without compromising bearing capacity and service life.



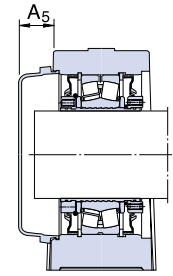
ConCentra roller bearing unit SYT for metric shafts



Non-locating bearing unit SYT .. L



Locating bearing unit SYT .. FTS

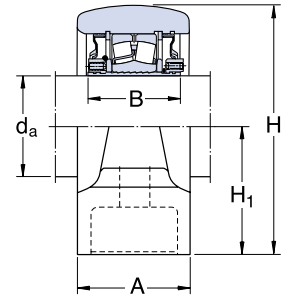


Shaft diameter d_a	Bearing unit Dimensions				H_2	J	L	N	N_1	G	Mass kg	Designations ¹⁾	
	A	B	H	H_1								Non-locating unit with double-lip seals	Locating unit with labyrinth seals
mm	mm										kg	-	
35	60	59,5	110	60	25	170	205	20	15	12	3,40	SYT 35 L	SYT 35 LTS
40	60	59,5	114	60	25	170	205	20	15	12	3,50	SYT 40 L	SYT 40 LTS
45	60	59,5	116	60	25	170	205	20	15	12	3,60	SYT 45 L	SYT 45 LTS
50	70	59,5	129	70	28	210	255	24	18	16	4,80	SYT 50 L	SYT 50 LTS
55	70	59,5	135	70	30	210	255	24	18	16	5,40	SYT 55 L	SYT 55 LTS
60	80	65,5	150	80	30	230	275	24	18	16	7,00	SYT 60 L	SYT 60 LTS
65	80	65,5	157	80	30	230	280	24	18	16	8,00	SYT 65 L	SYT 65 LTS
70	90	65,5	177	95	32	260	315	28	22	20	10,5	SYT 70 L	SYT 70 LTS
75	90	65,5	182	95	32	260	320	28	22	20	11,5	SYT 75 L	SYT 75 LTS

¹⁾ Locating bearing units are identified by the suffix F instead of L, e.g. SYT 35 F or SYT 35 FTS

Unit Basic designation	Bearing Basic designation	Basic load ratings		Calculation factors				Speed ratings for units with double-lip seals		Grease quantity Relubrication	Appropriate end cover	
		dynamic C	static C_0	e	Y_1	Y_2	Y_0	r/min	g		Designation	Protrusion A_5
-	-	kN		-	-	-	-	-	-	-	-	mm
SYT 35	22207	76,5	73,5	0,31	2,2	3,3	2,2	4 400	6 300	10	ECY 207	22
SYT 40	22208	96,5	90	0,28	2,4	3,6	2,5	4 000	6 000	10	ECY 208	23,5
SYT 45	22209	90	88	0,26	2,6	3,9	2,5	3 700	5 300	10	ECY 209	23
SYT 50	22210	96,5	100	0,24	2,8	4,2	2,8	3 500	5 000	10	ECY 210	29,5
SYT 55	22211	125	127	0,24	2,8	4,2	2,8	3 250	4 500	15	ECY 211	34
SYT 60	22212	156	166	0,24	2,8	4,2	2,8	3 000	4 300	15	ECY 212	35,5
SYT 65	22213	193	216	0,24	2,8	4,2	2,8	2 900	3 800	20	ECY 213	35,5
SYT 70	22214	208	228	0,22	3	4,6	2,8	2 650	3 600	20	ECY 214	38,5
SYT 75	22215	212	240	0,22	3	4,6	2,8	2 650	3 400	20	ECY 215	38,5

ConCentra Roller Bearing Unit



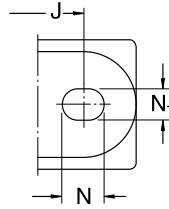
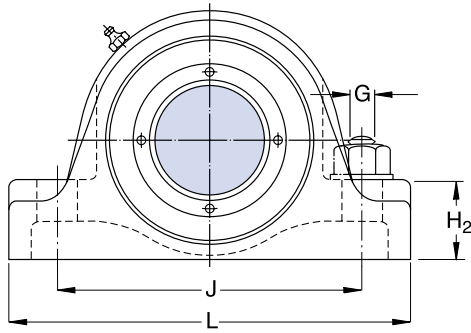
ConCentra roller bearing units SYR .. N for inch shafts

d_a 1 7/16 – 4 in

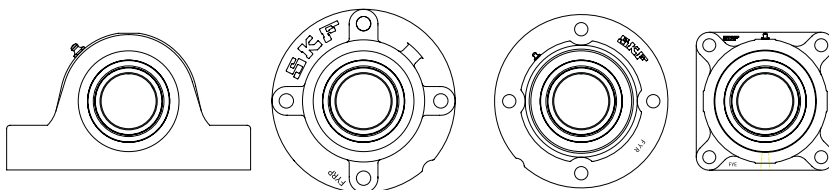
Shaft diameter d_a	Bearing unit Dimensions										Mass	Designation ¹⁾ Non-locating unit with double-lip seals
	A	B	H	H ₁	H ₂	J	L	N	N ₁	G		
in/mm	in/mm										lb/kg	-
1 7/16	2 1/16	2 11/32	3 7/8	1 7/8	1 3/16	5	6 7/8	15/16	5/8	1/2	7.00	SYR 1.7/16 N
36,512	52,4	59,5	98,4	47,6	30,2	127	174,6	23,8	15,9		3,18	
1 1/2	2 1/16	2 11/32	3 7/8	1 7/8	1 3/16	5	6 7/8	15/16	5/8	1/2	7.00	SYR 1.1/2 N
38,100	52,4	59,5	98,4	47,6	30,2	127	174,6	23,8	15,9		3,18	
1 11/16	2 1/16	2 11/32	4 1/4	2 1/8	1 5/16	5 1/2	7 3/8	1	5/8	1/2	8.00	SYR 1.11/16 N
42,862	52,4	59,5	108	54	33,3	139,7	187,3	25,4	15,9		3,62	
1 3/4	2 1/16	2 11/32	4 1/4	2 1/8	1 5/16	5 1/2	7 3/8	1	5/8	1/2	8.00	SYR 1.3/4 N
44,450	52,4	59,5	108	54	33,3	139,7	187,3	25,4	15,9		3,62	
1 15/16	2 1/16	2 11/32	4 9/16	2 1/4	1 3/8	6 1/4	8 3/8	1 1/16	3/4	5/8	9.20	SYR 1.15/16 N
49,212	52,4	59,5	115,9	57,2	34,9	158,8	212,7	27	19		4,17	
2	2 1/16	2 11/32	4 9/16	2 1/4	1 3/8	6 1/4	8 3/8	1 1/16	3/4	5/8	9.20	SYR 2 N
50,800	52,4	59,5	115,9	57,2	34,9	158,8	212,7	27	19		4,17	
2 3/16	2 5/16	2 11/32	5	2 1/2	1 5/8	6 3/4	8 7/8	1 1/16	3/4	5/8	12.0	SYR 2.3/16 N
55,562	58,7	59,5	127	63,5	41,3	171,5	225,4	27	19		5,44	
2 7/16	2 9/16	2 37/64	5 11/16	2 3/4	1 3/4	7 1/8	9 1/4	1 1/16	3/4	5/8	16.0	SYR 2.7/16 N
61,912	65,1	65,5	144,5	69,8	44,4	181	235	27	19		7,26	
2 1/2	2 9/16	2 37/64	5 11/16	2 3/4	1 3/4	7 1/8	9 1/4	1 1/16	3/4	5/8	16.0	SYR 2.1/2 N
63,500	65,1	65,5	144,5	69,8	44,4	181	235	27	19		7,26	
2 11/16	2 9/16	2 37/64	6 7/16	3 1/4	2 1/4	8 1/8	10 7/16	1 3/16	7/8	3/4	22.0	SYR 2.11/16 N
68,262	65,1	65,5	163,5	82,6	57,2	206,4	265,1	30,2	22,2		9,98	
2 3/4	2 9/16	2 37/64	6 7/16	3 1/4	2 1/4	8 1/8	10 7/16	1 3/16	7/8	3/4	22.0	SYR 2.3/4 N
69,850	65,1	65,5	163,5	82,6	57,2	206,4	265,1	30,2	22,2		9,98	
2 15/16	2 9/16	2 37/64	6 7/16	3 1/4	2 1/4	8 1/8	10 7/16	1 3/16	7/8	3/4	21.0	SYR 2.15/16 N
74,612	65,1	65,5	163,5	82,6	57,2	206,4	265,1	30,2	22,2		9,53	
3	2 9/16	2 37/64	6 7/16	3 1/4	2 1/4	8 1/8	10 7/16	1 3/16	7/8	3/4	21.0	SYR 3 N
76,200	65,1	65,5	163,5	82,6	57,2	206,4	265,1	30,2	22,2		9,53	
3 7/16	2 15/16	3 9/64	7 1/2	3 3/4	2 1/4	10	13	1 3/4	1	7/8	31.5	SYR 3.7/16 N
87,312	74,6	80	190,5	95,2	57,2	254	330,2	44,5	25,4		14,3	
3 1/2	2 15/16	3 9/64	7 1/2	3 3/4	2 1/4	10	13	1 3/4	1	7/8	31.5	SYR 3.1/2 N
88,900	74,6	80	190,5	95,2	57,2	254	330,2	44,5	25,4		14,3	
3 11/16	3 5/16	3 9/64	8 7/16	4 1/4	2 1/2	10 7/8	14 1/4	2	1 1/8	1	44.5	SYR 3.11/16 N
93,662	84,1	80	214,3	108	63,5	276,2	362	50,8	28,6		20,2	
3 15/16	3 15/16	3 9/64	8 7/16	4 1/4	2 1/2	10 7/8	14 1/4	2	1 1/8	1	43.5	SYR 3.15/16 N
100,012	84,1	80	214,3	108	63,5	276,2	362	50,8	28,6		19,7	
4	3 15/16	3 9/64	8 7/16	4 1/4	2 1/2	10 7/8	14 1/4	2	1 1/8	1	43.5	SYR 4 N
101,600	84,1	80	214,3	108	63,5	276,2	362	50,8	28,6		19,7	

With non-locating bearing units, the maximum possible axial displacement from the central position is 0,8 mm

¹⁾ Locating bearing units are identified by the suffix H, e.g. SYR 1.7/16 NH. Bearing units with labyrinth seals are identified by the suffix -118, e.g. SYR 1.7/16 N-118 or SYR 1.7/16 NH-118



Unit Designation	Bearing Basic designation	Basic load ratings		Calculation factors				Speed ratings for units with Tri-Gard seals labyrinth seals		Grease quantity Relubrication oz/g
		dynamic C	static C ₀	e	Y ₁	Y ₂	Y ₀	r/min		
-	-	lbf/kN		-				r/min		oz/g
SYR 1.7/16 N	22208	21 600 96,5	20 000 90	0,28	2,4	3,6	2,5	2 500	6 000	0,35 10
SYR 1.1/2 N	22208	21 600 96,5	20 000 90	0,28	2,4	3,6	2,5	2 500	6 000	0,35 10
SYR 1.11/16 N	22209	20 000 90	19 600 88	0,26	2,6	3,9	2,5	2 300	5 300	0,35 10
SYR 1.3/4 N	22209	20 000 90	19 600 88	0,26	2,6	3,9	2,5	2 300	5 300	0,35 10
SYR 1.15/16 N	22210	21 600 96,5	22 400 100	0,24	2,8	4,2	2,8	2 150	5 000	0,35 10
SYR 2 N	22210	21 600 96,5	22 400 100	0,24	2,8	4,2	2,8	2 150	5 000	0,35 10
SYR 2.3/16 N	22211	28 100 125	28 500 127	0,24	2,8	4,2	2,8	2 000	4 500	0,53 15
SYR 2.7/16 N	22213	43 000 193	48 000 216	0,24	2,8	4,2	2,8	1 800	3 800	0,70 20
SYR 2.1/2 N	22213	43 000 193	48 000 216	0,24	2,8	4,2	2,8	1 800	3 800	0,70 20
SYR 2.11/16 N	22215	47 500 212	54 000 240	0,22	3	4,6	2,8	1 600	3 400	0,70 20
SYR 2.3/4 N	22215	47 500 212	54 000 240	0,22	3	4,6	2,8	1 600	3 400	0,70 20
SYR 2.15/16 N	22215	47 500 212	54 000 240	0,22	3	4,6	2,8	1 600	3 400	0,70 20
SYR 3 N	22215	47 500 212	54 000 240	0,22	3	4,6	2,8	1 600	3 400	0,70 20
SYR 3.7/16 N	22218	73 500 325	85 000 375	0,24	2,8	4,2	2,8	1 400	2 600	1,25 35
SYR 3.1/2 N	22218	73 500 325	85 000 375	0,24	2,8	4,2	2,8	1 400	2 600	1,25 35
SYR 3.11/16 N	22220	95 000 425	110 000 490	0,24	2,8	4,2	2,8	1 250	2 200	1,60 45
SYR 3.15/16 N	22220	95 000 425	110 000 490	0,24	2,8	4,2	2,8	1 250	2 200	1,60 45
SYR 4 N	22220	95 000 425	110 000 490	0,24	2,8	4,2	2,8	1 250	2 200	1,60 45

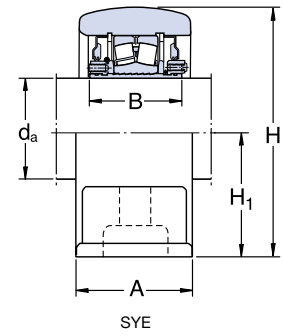


Different bearing housing styles
SKF ConCentra roller bearing units are available in a wide range of housing styles.

ConCentra Roller Bearing Unit

ConCentra roller bearing units SYE .. N and FSYE .. N for inch shafts

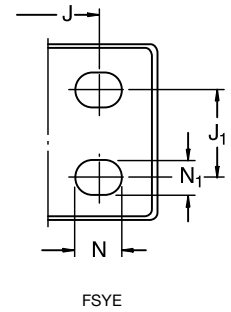
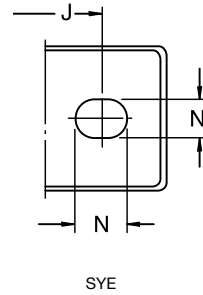
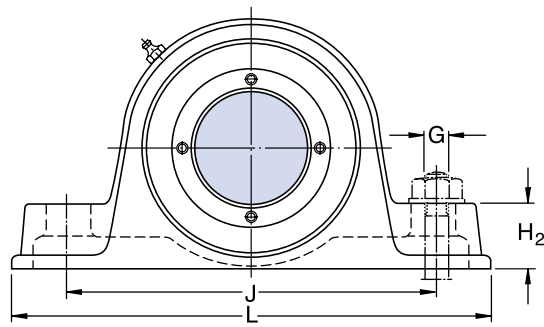
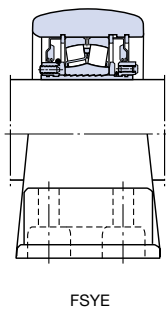
d_a 1 7/16 – 4 in



Shaft diameter d_a	Bearing unit Dimensions			H_1	H_2	J	J_1	L	N	N_1	G	Mass lb/kg	Designation ¹⁾ Non-locating unit with double-lip seals
	A	B	H										
in/mm	in/mm												-
1 7/16 36,512	2 1/8 54	2 11/32 59,5	3 7/8 98,4	1 7/8 47,6	1 1/8 28,6	5 3/4 146	-	7 3/8 187,3	3/4 19	5/8 15,9	1/2	8.00 3,62	SYE 1.7/16 N
1 1/2 38,100	2 3/8 60,3	2 11/32 59,5	4 1/4 108	2 1/8 54	1 1/4 31,8	6 1/4 158,8	-	7 7/8 200	3/4 19	5/8 15,9	1/2	8.00 3,62	SYE 1.1/2 N
1 11/16 42,862	2 3/8 60,3	2 11/32 59,5	4 1/4 108	2 1/8 54	1 1/4 31,8	6 1/4 158,8	-	7 7/8 200	3/4 19	5/8 15,9	1/2	9.30 4,22	SYE 1.11/16 N
1 3/4 44,450	2 1/2 63,5	2 11/32 59,5	4 1/2 114,3	2 1/2 57,2	1 5/16 33,3	7 177,8	-	8 7/8 225,4	7/8 22,2	3/4 19	5/8	9.30 4,22	SYE 1.3/4 N
1 15/16 49,212	2 1/2 63,5	2 11/32 59,5	4 1/2 114,3	2 1/2 57,2	1 5/16 33,3	7 177,8	-	8 7/8 225,4	7/8 22,2	3/4 19	5/8	10.5 4,76	SYE 1.15/16 N
2 50,800	2 1/2 63,5	2 11/32 59,5	4 1/2 114,3	2 1/4 57,2	1 5/16 33,3	7 177,8	-	8 7/8 225,4	7/8 22,2	3/4 19	5/8	10.5 4,76	SYE 2 N
2 3/16 55,562	2 5/8 66,7	2 11/32 59,5	5 127	2 1/2 63,5	1 1/2 38,1	7 3/4 196,8	-	9 5/8 244,4	7/8 22,2	3/4 19	5/8	13.5 6,12	SYE 2.3/16 N
2 7/16 61,912	2 7/8 73	2 37/64 65,5	5 11/16 144,5	2 3/4 69,8	1 5/8 41,3	8 1/2 216	-	10 1/2 266,7	1 25,4	3/4 19	5/8	18.5 8,39	SYE 2.7/16 N
3 1/2 63,500	3 1/2 88,9	2 37/64 65,5	5 11/16 144,5	2 3/4 69,8	1 5/8 41,3	8 1/2 216	1 7/8 47,6	10 1/2 266,7	1 25,4	3/4 19	5/8	19.0 8,62	FSYE 2.7/16 N
2 1/2 63,500	2 7/8 73	2 37/64 65,5	5 11/16 144,5	2 3/4 69,8	1 5/8 41,3	8 1/2 216	-	10 1/2 266,7	1 25,4	3/4 19	5/8	18.5 8,39	SYE 2.1/2 N
3 1/2 63,500	3 1/2 88,9	2 37/64 65,5	5 11/16 144,5	2 3/4 69,8	1 5/8 41,3	8 1/2 216	1 7/8 47,6	10 1/2 266,7	1 25,4	3/4 19	5/8	19.0 8,62	FSYE 2.1/2 N
2 11/16 68,262	3 76,2	2 37/64 65,5	6 5/16 160,3	3 1/8 79,4	1 7/8 47,6	9 1/2 241,3	-	12 304,8	1 1/8 28,6	7/8 22,2	3/4	25.5 11,6	SYE 2.11/16 N
3 69,850	3 76,2	2 37/64 65,5	6 5/16 160,3	3 1/8 79,4	1 7/8 47,6	9 1/2 241,3	2 1/8 54	12 304,8	1 1/8 28,6	3/4 19	5/8	25.5 11,6	FSYE 2.11/16 N
2 3/4 69,850	3 76,2	2 37/64 65,5	6 5/16 160,3	3 1/8 79,4	1 7/8 47,6	9 1/2 241,3	-	12 304,8	1 1/8 28,6	7/8 22,2	3/4	25.5 11,6	SYE 2.3/4 N
3 69,850	3 76,2	2 37/64 65,5	6 5/16 160,3	3 1/8 79,4	1 7/8 47,6	9 1/2 241,3	2 1/8 54	12 304,8	1 1/8 28,6	3/4 19	5/8	25.5 11,6	FSYE 2.3/4 N
2 15/16 74,612	3 76,2	2 37/64 65,5	6 5/16 160,3	3 1/8 79,4	1 7/8 47,6	9 1/2 241,3	-	12 304,8	1 1/8 28,6	7/8 22,2	3/4	24.0 10,9	SYE 2.15/16 N
3 76,200	3 76,2	2 37/64 65,5	6 5/16 160,3	3 1/8 79,4	1 7/8 47,6	9 1/2 241,3	2 1/8 54	12 304,8	1 1/8 28,6	3/4 19	5/8	24.0 10,9	FSYE 2.15/16 N
3 76,200	3 76,2	2 37/64 65,5	6 5/16 160,3	3 1/8 79,4	1 7/8 47,6	9 1/2 241,3	-	12 304,8	1 1/8 28,6	7/8 22,2	3/4	23.5 10,7	SYE 3 N
3 1/2 88,900	3 1/2 92,1	2 37/64 65,5	6 5/16 160,3	3 1/8 79,4	1 7/8 47,6	9 1/2 241,3	2 1/8 54	12 304,8	1 1/8 28,6	3/4 19	5/8	24.0 10,9	FSYE 3 N
3 7/16 87,312	3 5/8 92,1	3 9/64 80	7 1/2 190,5	3 3/4 95,2	2 1/4 57,2	11 279,4	-	14 355,6	1 5/16 33,3	1 25,4	7/8	35.5 16,1	SYE 3.7/16 N
4 1/2 88,900	4 1/2 114,3	3 9/64 80	7 1/2 190,5	3 3/4 95,2	2 1/4 57,2	11 279,4	2 3/8 60,3	14 355,6	1 5/16 33,3	7/8 22,2	3/4	36.5 16,6	FSYE 3.7/16 N
3 1/2 88,900	3 5/8 92,1	3 9/64 80	7 1/2 190,5	3 3/4 95,2	2 1/4 57,2	11 279,4	-	14 355,6	1 5/16 33,3	1 25,4	7/8	35.5 16,1	SYE 3.1/2 N
4 1/2 88,900	4 1/2 114,3	3 9/64 80	7 1/2 190,5	3 3/4 95,2	2 1/4 57,2	11 279,4	2 3/8 60,3	14 355,6	1 5/16 33,3	7/8 22,2	3/4	36.5 16,6	FSYE 3.1/2 N
3 11/16 93,662	4 1/2 114,3	3 9/64 80	8 9/16 217,5	4 1/4 108	2 7/16 61,9	12 1/2 317,5	2 1/4 57,2	15 1/4 387,4	1 3/8 34,9	7/8 22,2	3/4	50.5 22,9	FSYE 3.11/16 N
3 15/16 100,012	4 1/2 114,3	3 9/64 80	8 9/16 217,5	4 1/4 108	2 7/16 61,9	12 1/2 317,5	2 1/4 57,2	15 1/4 387,4	1 3/8 34,9	7/8 22,2	3/4	49.5 22,5	FSYE 3.15/16 N
4 101,600	4 1/2 114,3	3 9/64 80	8 9/16 217,5	4 1/4 108	2 7/16 61,9	12 1/2 317,5	2 1/4 57,2	15 1/4 387,4	1 3/8 34,9	7/8 22,2	3/4	49.5 22,5	FSYE 4 N

With non-locating bearing units, the maximum possible axial displacement from the central position is 0,8 mm

¹⁾ Locating bearing units are identified by the suffix H, e.g. SYE 1.7/16 NH. Bearing units with labyrinth seals are identified by the suffix -118, e.g. SYE 1.7/16 N-118 or FSYE 2.7/16 NH-118



Unit Designation	Bearing Basic designation	Basic load ratings		Calculation factors				Speed ratings for units with		Grease quantity Relubrication
		dynamic C	static C ₀	e	Y ₁	Y ₂	Y ₀	Tri-Gard seals	labyrinth seals	
-	-	lbf/kN		-	-	-	-	r/min	-	oz/g
SYE 1.7/16 N	22208	21 600 96,5	20 000 90	0,28	2,4	3,6	2,5	2 500	6 000	0.35 10
SYE 1.1/2 N	22208	21 600 96,5	20 000 90	0,28	2,4	3,6	2,5	2 500	6 000	0.35 10
SYE 1.11/16 N	22209	20 000 90	19 600 88	0,26	2,6	3,9	2,5	2 300	5 300	0.35 10
SYE 1.3/4 N	22209	20 000 90	19 600 88	0,26	2,6	3,9	2,5	2 300	5 300	0.35 10
SYE 1.15/16 N	22210	21 600 96,5	22 400 100	0,24	2,8	4,2	2,8	2 150	5 000	0.35 10
SYE 2 N	22210	21 600 96,5	22 400 100	0,24	2,8	4,2	2,8	2 150	5 000	0.35 10
SYE 2.3/16 N	22211	28 100 125	28 500 127	0,24	2,8	4,2	2,8	2 000	4 500	0.53 15
SYE 2.7/16 N	22213	43 000 193	48 000 216	0,24	2,8	4,2	2,8	1 800	3 800	0.70 20
FSYE 2.7/16 N	22213	43 000 193	48 000 216	0,24	2,8	4,2	2,8	1 800	3 800	0.70 20
SYE 2.1/2 N	22213	43 000 193	48 000 216	0,24	2,8	4,2	2,8	1 800	3 800	0.70 20
FSYE 2.1/2 N	22213	43 000 193	48 000 216	0,24	2,8	4,2	2,8	1 800	3 800	0.70 20
SYE 2.11/16 N	22215	47 500 212	54 000 240	0,22	3	4,6	2,8	1 600	3 400	0.70 20
FSYE 2.11/16 N	22215	47 500 212	54 000 240	0,22	3	4,6	2,8	1 600	3 400	0.70 20
SYE 2.3/4 N	22215	47 500 212	54 000 240	0,22	3	4,6	2,8	1 600	3 400	0.70 20
FSYE 2.3/4 N	22215	47 500 212	54 000 240	0,22	3	4,6	2,8	1 600	3 400	0.70 20
SYE 2.15/16 N	22215	47 500 212	54 000 240	0,22	3	4,6	2,8	1 600	3 400	0.70 20
FSYE 2.15/16 N	22215	47 500 212	54 000 240	0,22	3	4,6	2,8	1 600	3 400	0.70 20
SYE 3 N	22215	47 500 212	54 000 240	0,22	3	4,6	2,8	1 600	3 400	0.70 20
FSYE 3 N	22215	47 500 212	54 000 240	0,22	3	4,6	2,8	1 600	3 400	0.70 20
SYE 3.7/16 N	22218	73 500 325	85 000 375	0,24	2,8	4,2	2,8	1 400	2 600	1.25 35
FSYE 3.7/16 N	22218	73 500 325	85 000 375	0,24	2,8	4,2	2,8	1 400	2 600	1.25 35
SYE 3.1/2 N	22218	73 500 325	85 000 375	0,24	2,8	4,2	2,8	1 400	2 600	1.25 35
FSYE 3.1/2 N	22218	73 500 325	85 000 375	0,24	2,8	4,2	2,8	1 400	2 600	1.25 35
FSYE 3.11/16 N	22220	95 000 425	110 000 490	0,24	2,8	4,2	2,8	1 250	2 200	1.60 45
FSYE 3.15/16 N	22220	95 000 425	110 000 490	0,24	2,8	4,2	2,8	1 250	2 200	1.60 45
FSYE 4 N	22220	95 000 425	110 000 490	0,24	2,8	4,2	2,8	1 250	2 200	1.60 45



® SKF is a registered trademark
of the SKF Group.

© Copyright SKF 2003

The contents of this publication are the copyright of the publisher and may not be reproduced (even extracts) unless permission is granted. Every care has been taken to ensure the accuracy of the information contained in this publication but no liability can be accepted for any loss or damage whether direct, indirect or consequential arising out of the use of the information contained herein.

Publication **5277 E**

Printed in Sweden on environmentally friendly, chlorine-free paper (Multiart Silk) by Sandstens Tryckeri AB.
