

# INSIGHT

— get the latest industry and company news from ACORN —

**acorn**<sup>®</sup>  
industrial services limited

Q4  
2020  
Issue 8



## Game changing maintenance equipment

### Hassle free predictive maintenance



## P2

Your new bearings & maintenance man

---

## P7

Enhance performance with Ewellix linear bearings

---

## P8

Bearing heater hire service & more

News & Updates |

# FEATURED PRODUCTS

new | innovative | value

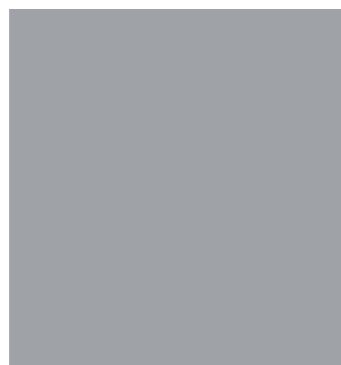
## TIMKEN Type-E TRB Housed Units

Benefit from reduced downtime, less maintenance & better performance. Featuring a premium quality Timken tapered roller bearing along with a double lip seal, both housed within a robust cast iron housing.



## FALK Couplings

Same-day availability and unmatched technical expertise on FALK products.



## FALK Steelflex Couplings

With durable designs to extend equipment life, along with some of the largest maximum bore sizes on the market, FALK couplings are ideal for use in even the toughest conditions.

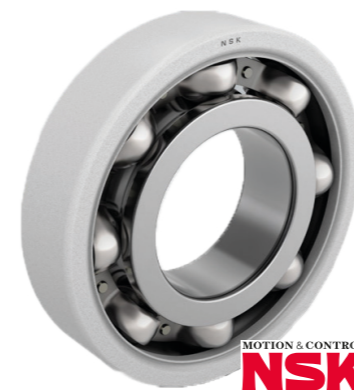
## Petro Canada Environ MV R

Biodegradable hydraulic fluid has a longer life and greater wear protection than vegetable and synthetic ester products. It also extends drain intervals for less maintenance.



## TOCO Ball Screw components

TOCO ball screw nuts & shafts are machined to the highest standards. High reliability, smooth operation, high rigidity & pre-load are just some of the many benefits of using this type of rotary motion.



## NSK Ceramic insulated bearings

These bearings are designed to support energy efficiency, while contending with the risk of electrical current damage to bearings. HDY2 series optimise insulation and thermal conductivity characteristics.

## YOUR NEW BEARINGS & MAINTENANCE EXPERT



Name: **Andy Fletcher**  
 Experience: **16 years with NSK-RHP inc 9 years in Research & Design**  
 With Acorn: **Andy brings a wealth of experience to assist customers with their application requirements.**

Acorn Industrial Services Ltd is delighted to announce the appointment of its new Bearing and Maintenance Product Manager, Andy Fletcher. Andy brings with him 16 years of experience which he will put to use in assisting ACORN's customers with all of their bearing and maintenance requirements.

On his appointment, Andy said: "I am delighted to be joining ACORN as Bearing and Maintenance Product Manager. The levels of support that ACORN offer, along with the wide range of products available presents a huge advantage. I'm looking forward to assisting our branches and their customers across the UK whilst further developing ACORN's bearing and maintenance product range."

Andy's previous experience includes nine years in NSK-RHP's Research and Design facility where he was responsible for application and engineering support for the European field-based team. In this role, he developed a deep technical understanding of the products and their design qualities.

From here, Andy gained a further seven years of experience in NSK-RHP's UK Field-Based Application Engineering team. He benefited from first-hand industry experience. This knowledge and experience will enable Andy to assist customers with their application requirements, along with helping them to improve on the lifespan of their bearings and other components.

# Game changing maintenance equipment

*Take the complication out of condition monitoring with a Plug & Play system.*

**Downtime is something that every business wants to avoid. All too often engineers spend most of their time fire-fighting component failure, leaving little time for system optimisation and improvements. High levels of downtime mean that production is compromised and profits are minimised.**

Predictive maintenance solutions are often seen as the expensive option and systems may appear complicated to install and operate. However, condition monitoring allows engineers to identify failure before it occurs, enabling maintenance to be scheduled at a convenient time. But is predictive maintenance really realistic for every business?

SKF has unveiled its new entry level asset health system, making predictive maintenance accessible for all. SKF Plug and Play allows key data to be quickly measured and assessed, preventing asset downtime. If an alert is triggered, this can be sent directly to the experts for analysis and advice.

The SKF Plug and Play package includes an SKF QuickCollect sensor, the downloadable SKF Pulse app, 24 free pulse checks by experts and access to the e-learning platform. If an alert is triggered, the user has the option to send the data to a SKF expert for a pulse check. With 24 pulse checks included with the package, predictive maintenance is made



both easy and affordable. Further pulse checks are also available, Speak to a member of our sales team to confirm prices.

This simple system and pulse check integration means that no specialist training is required to use the system. Simply connect the sensor, load up the app and view the status of your machine components. If you want to understand more about the system and the performance of your machinery, the e-learning platform will develop and enhance your knowledge, allowing you to increase the benefits of the system.

With many companies looking to limit visits from

outside technicians to reduce contact, simple methods to monitor machinery in-house are becoming more and more valuable. The SKF Plug and Play asset health system is a fantastic starting point for any company looking for a cost-effective and scalable entry level predictive maintenance system.

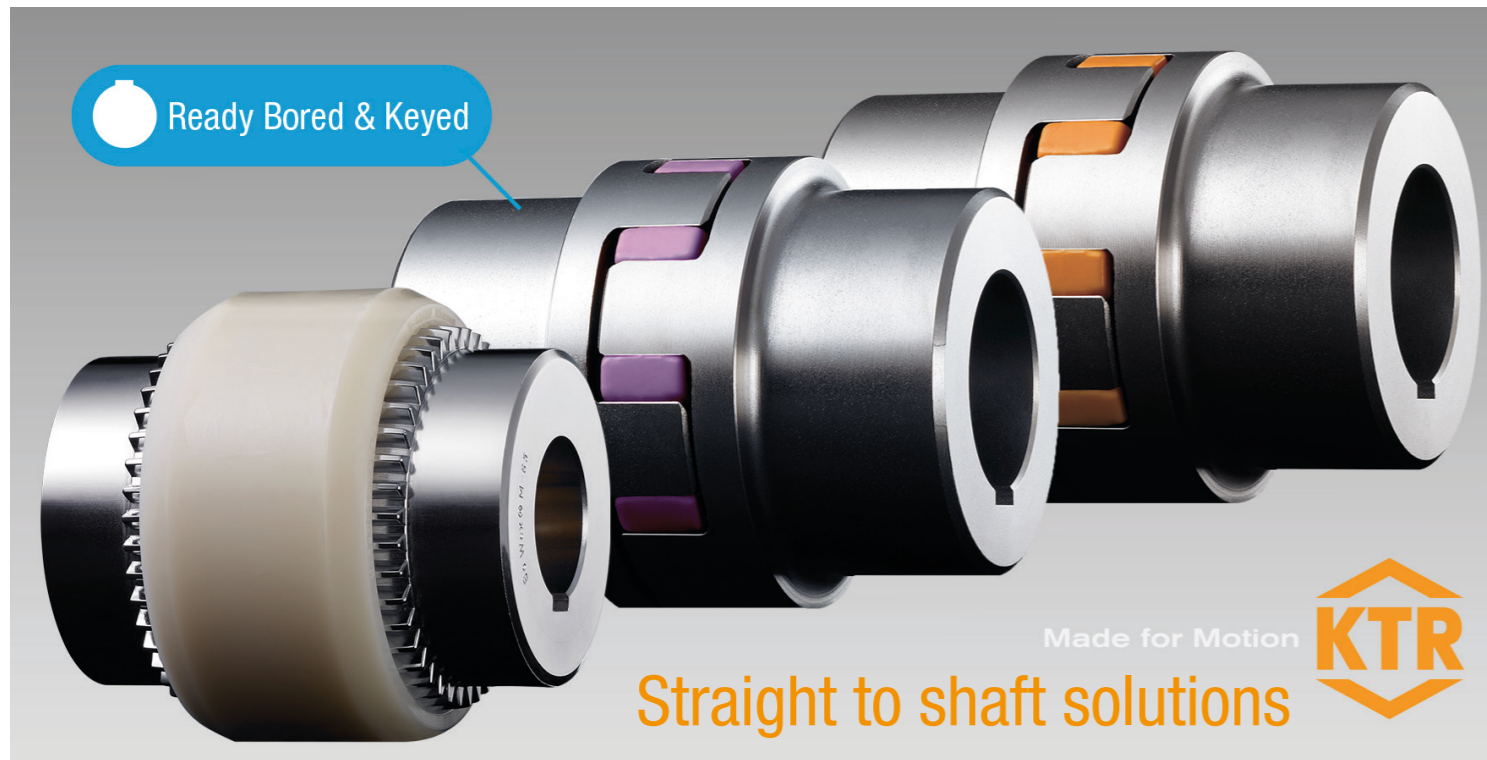
## TALK TO THE EXPERTS

Get in touch with our Bearing & Maintenance expert toady:

T: 0800 8766 441 W: [www.acorn-ind.co.uk](http://www.acorn-ind.co.uk)

E: [enquiries@acorn-ind.co.uk](mailto:enquiries@acorn-ind.co.uk)

Power Transmission & Motion Control



# Tsubaki Titan Chain

*Tsubaki have released a new chain brand that 'combines the best features of GT4 Winner chain with new specifications designed to deliver the ultimate in wear performance.'*

**TSUBAKI Titan Chain, is designed to offer previously unobtainable wear life in harsh applications, like in abrasive and dusty conditions, such as those found in timber mills, stone sawyers or brickworks.**

The use of seamless bushes that incorporate Lube Grooves ensure the smoothest possible operation which will help minimise wear. As a result of these innovations, maintenance cost and downtime are reduced to a minimum. The development team have specified corrosion resistant nickel plated outer link plates for the TSUBAKI Titan Chain, which combined with black oxide inner link plates provide an extra layer of protection against corrosion. As standard, TSUBAKI Titan Chain is available in sizes 12B to 32B. Additional sizes, multi-strand and attachment options will be available upon request.



# Enhance performance with EWELLIX linear bearings



Earlier this year, EWELLIX successfully launched the D-series of open linear ball bearings, bringing a new class of performance to linear motion. The LBCT D and LBCF D open linear ball bearings are ideal for use on supported shafts.

The new D-series of open linear ball bearings offers vastly improved running characteristics along with increased load ratings and a simplified mounting procedure. This helps to slash downtime whilst improving efficiency – something that every business is looking for.

These open linear ball bearings by EWELLIX offer a considerable increase in the dynamic load rating, with up to 40% extra capacity when compared to the previous model. This is thanks to the optimised geometry of the raceways and the larger rolling elements. This increase in load capacity means that users can downsize and use smaller bearings with higher load ratings, saving installation space and reducing the overall weight of the application.

The LBCT D and LBCF D open linear ball

bearings facilitate fast production cycles, along with high output. Accelerations of up to 100 m/s<sup>2</sup> are tolerated, along with a maximum speed of 5 m/s. This means that these bearings are suitable for use in many high-speed applications.

Keeping downtime to a minimum is essential for businesses looking to optimise productivity and maximise profits. That's why EWELLIX has made this range of open linear ball bearings as easy as possible to install. The main load direction and the lubrication port position is clearly marked, making installation and replacement quick and easy.

EWELLIX D-series open linear ball bearings offer smooth linear motion with a low coefficient of friction and minimal noise. This is due to the innovative cage design, the larger raceways and the optimised ball recirculation.

These bearings can be used as a direct replacement for their predecessors. With an ambient temperature range of between -20 and +80 degrees Celsius, these open linear ball bearings are ideal for use in a vast range of applications, including

traditional machine and plant construction, transport and handling solutions and medical applications.

If you're looking for high levels of rigidity, the LBCT D variant is the way to go. Its straight raceways offer outstanding levels of rigidity and stiffness, ensuring highly accurate and precise linear motion.

However, if you need a linear bearing which allows of shaft misalignment, the LBCF D variant may be the right option for you. This design is able to compensate bearing or shaft misalignment of up to 30 minutes of arc, automatically balancing out alignment errors.

Many options are available including lightweight linear bearing units with aluminium housings, flanged bearing units, tandem and quadro variants.



**Talk to the linear team today**

T: 0800 8766 441 W: [www.acorn-ind.co.uk](http://www.acorn-ind.co.uk)

E: [linear@acorn-ind.co.uk](mailto:linear@acorn-ind.co.uk)

Services & Offers |

# Bearing Heater Hire



Fitting bearings safely without the expense of buying a heater:

- Increase machine uptime
- Reduce costs
- Less effort and increased safety



Find out more: [www.acorn-ind.co.uk/bearing-heater-hire/](http://www.acorn-ind.co.uk/bearing-heater-hire/)

## Let us do the hard work

*Our cutting services means linear rails, timing belts, poly-v belts and drive chain can be cut and despatched within 24 hours, ready to be fitted.*



Straight to shaft solutions