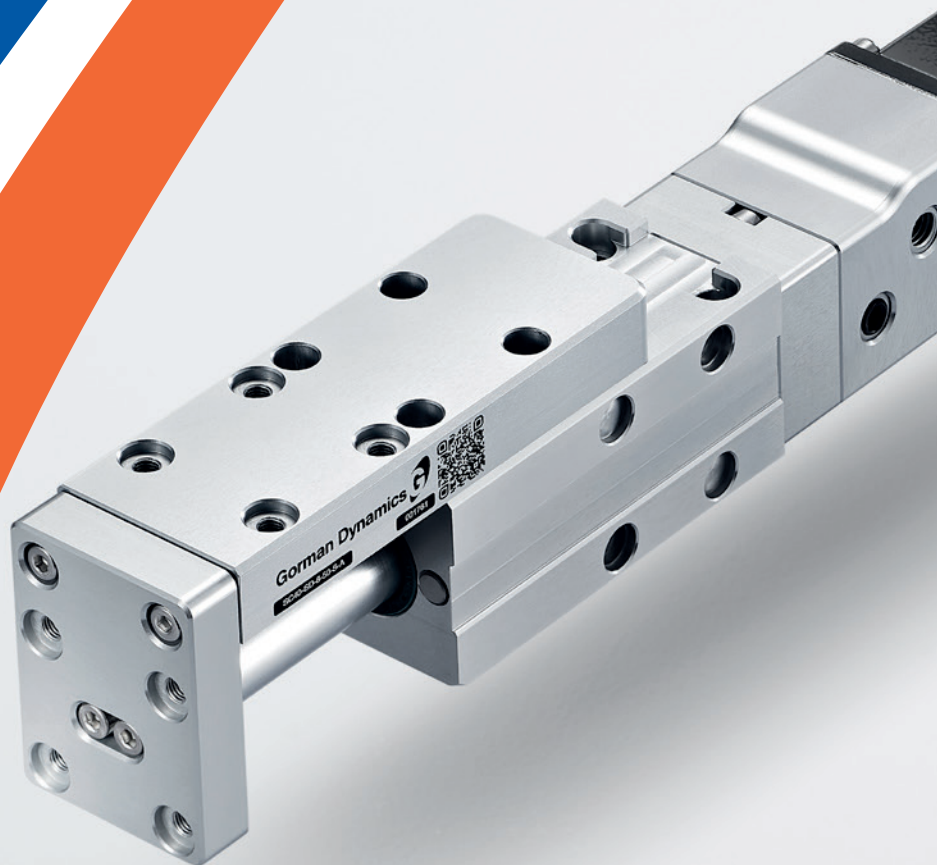


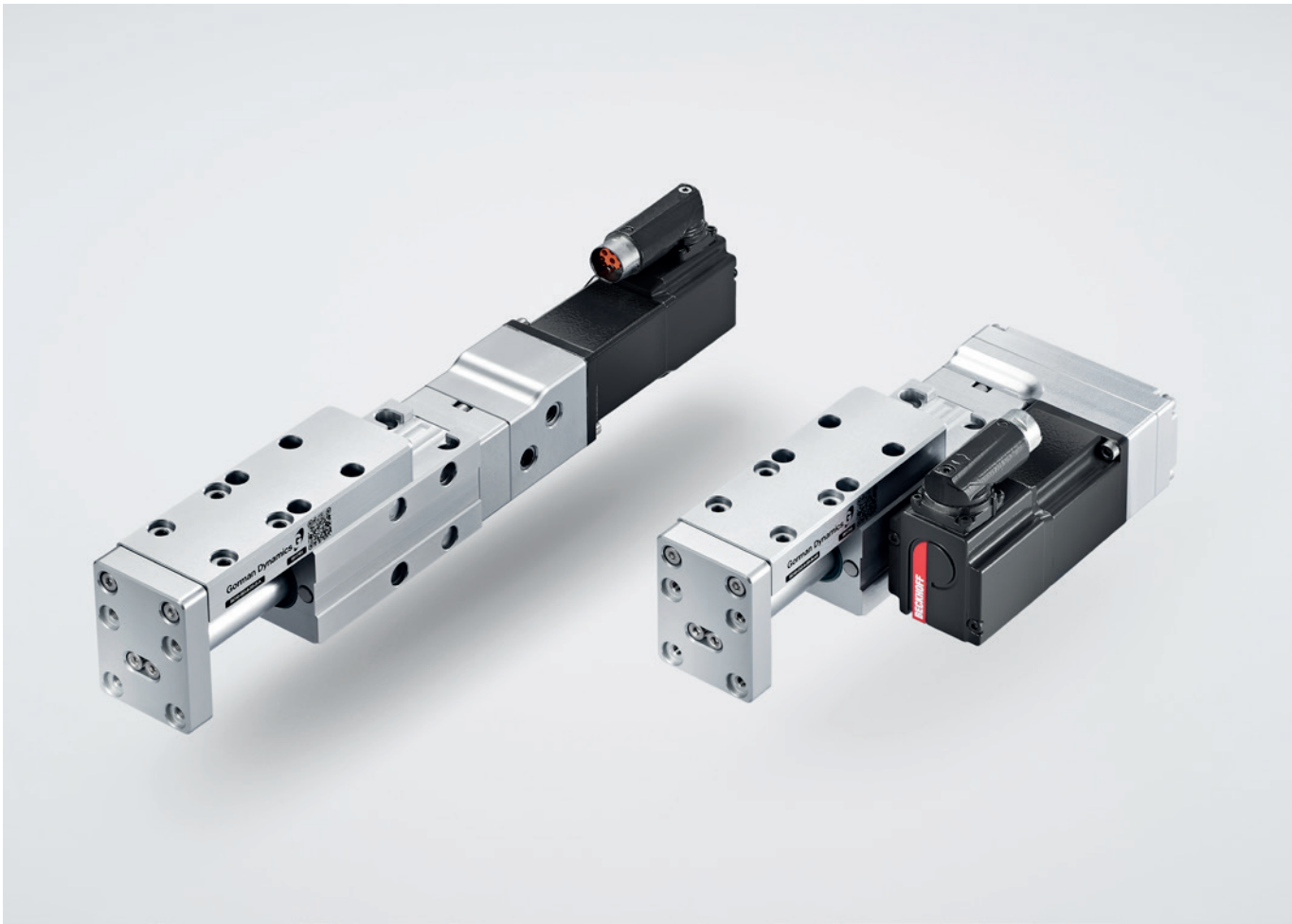
Product Technical Data Sheets

Linear Servo Actuator (SC40)



**Gorman
Dynamics**

INTELLIGENT AUTOMATION... YOUR PARTNER IN MOTION



Linear Servo Actuator (SC40)

Overview

The SC40 linear actuator range makes automation easier with its ready to teach features.

Each actuator is factory tuned and homed for a unique plug and play experience greatly reducing programming and commission times.

The strong, fast and ultra-compact SC40 range has feature such as payloads of up to 2kg and velocity of 600 mm/s with repeatability 0.01 mm.

Key Features

- Designed for high precision, high load, continuous operation with highly accurate positional repeatability.
- 100% duty cycle.
- Multi-turn absolute encoders.
- Modular mounting design allows multiple units to be combined in various configurations to suit a wide range of applications.
- Available in standard and compact formats to suit space requirements.
- Plug & Play via supplied Easy Teach Software. All units are supplied pre-tuned.
- Zero-maintenance bearings

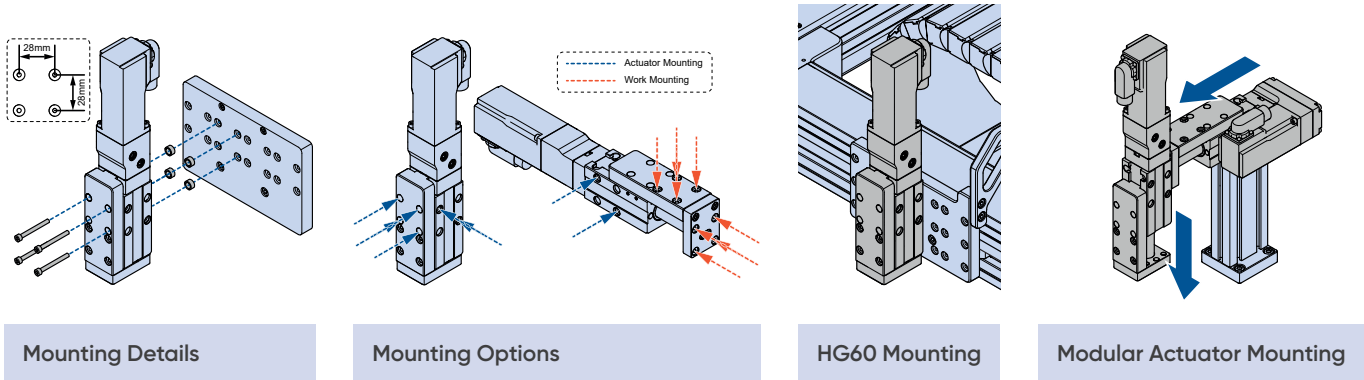
Specifications

SC40	TYPE	STROKE	BRAKE	DRIVE MOUNT
	SD – Standard	50/70/90	S – No Brake	A...D / AA...CC
	CO – Compact	– Stroke in mm	B – With Brake	– Alignment

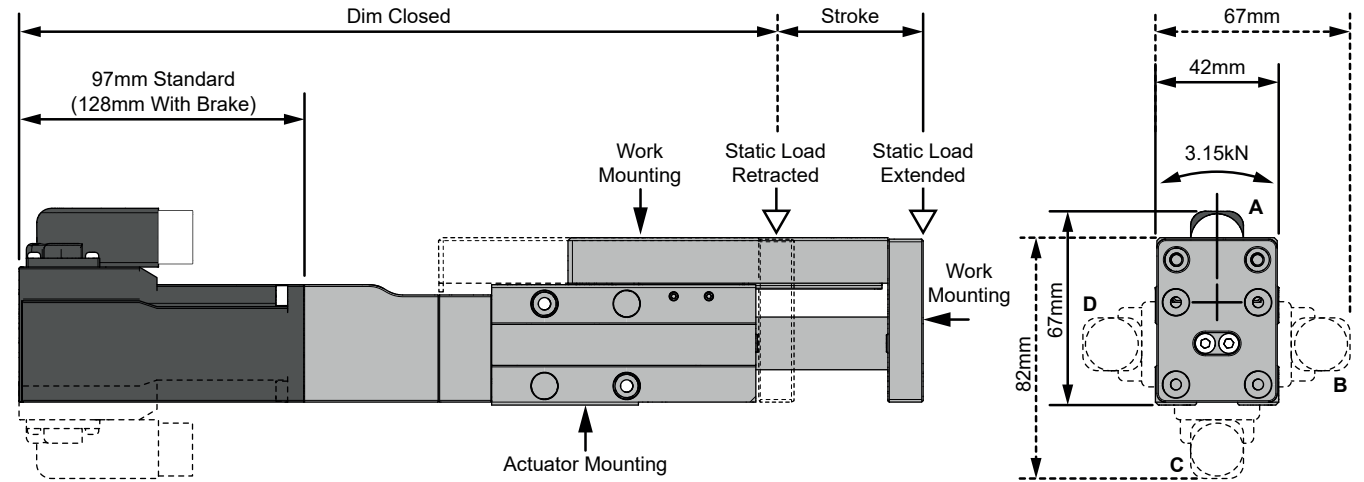
- SC40-SD-50-S-A: Standard format, 50mm stroke, no brake, front cable entry.
- SC40-CO-70-B-AC: Compact format, 70mm stroke, with brake, cable entry opposite to work mounting face, motor on left when viewed on work mounting face.

Mounting and Modularity

Each actuator is supplied with a kit enabling solid mounting to suitable mounting plates, or directly onto other Gorman Dynamics actuators.

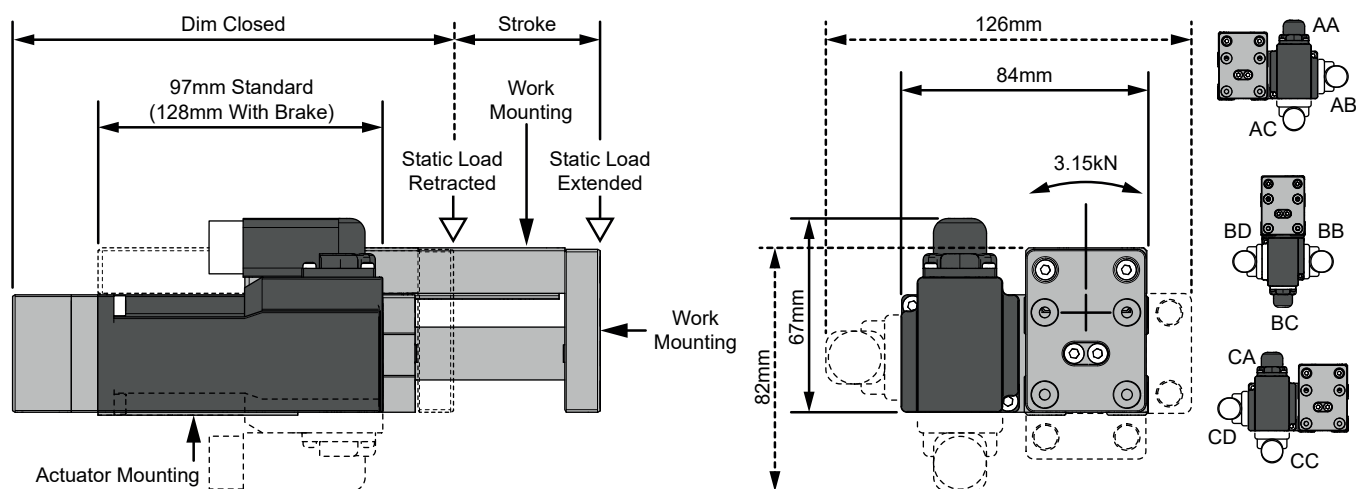


Standard Format



MODEL	STATIC LOAD (N)		STROKE (mm)	DIM CLOSED (mm)		MASS (kg)		SPEED (mm/s)	ACCELERATION (m/s ²)	POSITIONAL REPEATABILITY (mm)
	Retracted	Extended		Standard	Brake	Standard	Brake			
SC40-SD-50- - -	280	93	50	264	295	1.42	1.62	600	12	±0.01
SC40-SD-70- - -		73.5	70	284	315	1.54	1.74			
SC40-SD-90- - -		60.5	90	304	335	1.68	1.88			

Compact Format



MODEL	STATIC LOAD (N)		STROKE (mm)	DIM CLOSED (mm)		MASS (kg)		SPEED (mm/s)	ACCELERATION (m/s ²)	POSITIONAL REPEATABILITY (mm)
	Retracted	Extended		Standard	Brake	Standard	Brake			
SC40-CO-50- - - -	280	93	50	156	163	1.42	1.62	600	12	±0.01
SC40-CO-70- - - -		73.5	70	176	176	1.54	1.74			
SC40-CO-90- - - -		60.5	90	196	196	1.68	1.88			

Automation made easy

Designed with versatility in mind, Gorman Dynamics modular system and intuitive software solution enables seamless integration.

Without the need for intricate and time-consuming programming, our intention is to create a truly integrated platform for all of your automated needs.

Gorman Dynamics have made being better easier.



**Gorman
Dynamics**

T. +44 (0)1202 118 444
E. sales@gormandynamics.com
www.gormandynamics.com